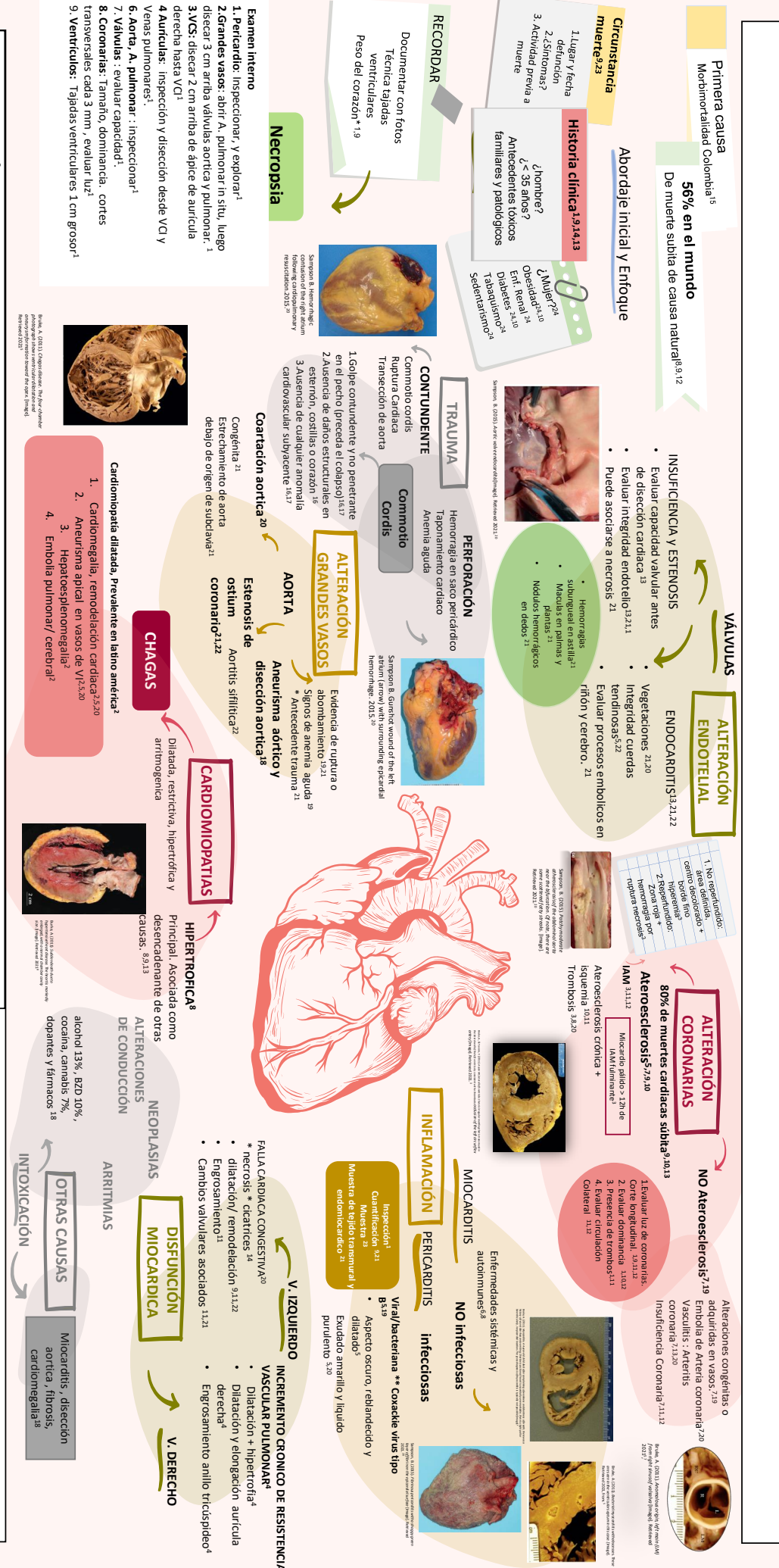


INFOGRAFÍA FORENSE

MUERTE SIN CAUSA APARENTE DE ORIGEN CARDIOVASCULAR



BIBLIOGRAFÍA:

1. Simpson C, Williams B, Kellum J. (2015) Guidelines for autopsy investigations of sudden cardiac death. 2013 updated from the Association for European Cardiac Pathology. *Int J Legal Med*, 42(18), 1819-1826. <https://doi.org/10.1007/s00414-015-0322-2>
2. Simpson C, Williams B, Kellum J. (2015) Guidelines for autopsy investigations of sudden cardiac death. 2013 updated from the Association for European Cardiac Pathology. *Int J Legal Med*, 42(18), 1819-1826. <https://doi.org/10.1007/s00414-015-0322-2>
3. Simpson C, Williams B, Kellum J. (2015) Guidelines for autopsy investigations of sudden cardiac death. 2013 updated from the Association for European Cardiac Pathology. *Int J Legal Med*, 42(18), 1819-1826. <https://doi.org/10.1007/s00414-015-0322-2>
4. Simpson C, Williams B, Kellum J. (2015) Guidelines for autopsy investigations of sudden cardiac death. 2013 updated from the Association for European Cardiac Pathology. *Int J Legal Med*, 42(18), 1819-1826. <https://doi.org/10.1007/s00414-015-0322-2>
5. Simpson C, Williams B, Kellum J. (2015) Guidelines for autopsy investigations of sudden cardiac death. 2013 updated from the Association for European Cardiac Pathology. *Int J Legal Med*, 42(18), 1819-1826. <https://doi.org/10.1007/s00414-015-0322-2>
6. Simpson C, Williams B, Kellum J. (2015) Guidelines for autopsy investigations of sudden cardiac death. 2013 updated from the Association for European Cardiac Pathology. *Int J Legal Med*, 42(18), 1819-1826. <https://doi.org/10.1007/s00414-015-0322-2>
7. Simpson C, Williams B, Kellum J. (2015) Guidelines for autopsy investigations of sudden cardiac death. 2013 updated from the Association for European Cardiac Pathology. *Int J Legal Med*, 42(18), 1819-1826. <https://doi.org/10.1007/s00414-015-0322-2>
8. Simpson C, Williams B, Kellum J. (2015) Guidelines for autopsy investigations of sudden cardiac death. 2013 updated from the Association for European Cardiac Pathology. *Int J Legal Med*, 42(18), 1819-1826. <https://doi.org/10.1007/s00414-015-0322-2>
9. Simpson C, Williams B, Kellum J. (2015) Guidelines for autopsy investigations of sudden cardiac death. 2013 updated from the Association for European Cardiac Pathology. *Int J Legal Med*, 42(18), 1819-1826. <https://doi.org/10.1007/s00414-015-0322-2>
10. Simpson C, Williams B, Kellum J. (2015) Guidelines for autopsy investigations of sudden cardiac death. 2013 updated from the Association for European Cardiac Pathology. *Int J Legal Med*, 42(18), 1819-1826. <https://doi.org/10.1007/s00414-015-0322-2>
11. Simpson C, Williams B, Kellum J. (2015) Guidelines for autopsy investigations of sudden cardiac death. 2013 updated from the Association for European Cardiac Pathology. *Int J Legal Med*, 42(18), 1819-1826. <https://doi.org/10.1007/s00414-015-0322-2>
12. Simpson C, Williams B, Kellum J. (2015) Guidelines for autopsy investigations of sudden cardiac death. 2013 updated from the Association for European Cardiac Pathology. *Int J Legal Med*, 42(18), 1819-1826. <https://doi.org/10.1007/s00414-015-0322-2>
13. Simpson C, Williams B, Kellum J. (2015) Guidelines for autopsy investigations of sudden cardiac death. 2013 updated from the Association for European Cardiac Pathology. *Int J Legal Med*, 42(18), 1819-1826. <https://doi.org/10.1007/s00414-015-0322-2>
14. Simpson C, Williams B, Kellum J. (2015) Guidelines for autopsy investigations of sudden cardiac death. 2013 updated from the Association for European Cardiac Pathology. *Int J Legal Med*, 42(18), 1819-1826. <https://doi.org/10.1007/s00414-015-0322-2>
15. Simpson C, Williams B, Kellum J. (2015) Guidelines for autopsy investigations of sudden cardiac death. 2013 updated from the Association for European Cardiac Pathology. *Int J Legal Med*, 42(18), 1819-1826. <https://doi.org/10.1007/s00414-015-0322-2>
16. Simpson C, Williams B, Kellum J. (2015) Guidelines for autopsy investigations of sudden cardiac death. 2013 updated from the Association for European Cardiac Pathology. *Int J Legal Med*, 42(18), 1819-1826. <https://doi.org/10.1007/s00414-015-0322-2>
17. Simpson C, Williams B, Kellum J. (2015) Guidelines for autopsy investigations of sudden cardiac death. 2013 updated from the Association for European Cardiac Pathology. *Int J Legal Med*, 42(18), 1819-1826. <https://doi.org/10.1007/s00414-015-0322-2>
18. Simpson C, Williams B, Kellum J. (2015) Guidelines for autopsy investigations of sudden cardiac death. 2013 updated from the Association for European Cardiac Pathology. *Int J Legal Med*, 42(18), 1819-1826. <https://doi.org/10.1007/s00414-015-0322-2>
19. Simpson C, Williams B, Kellum J. (2015) Guidelines for autopsy investigations of sudden cardiac death. 2013 updated from the Association for European Cardiac Pathology. *Int J Legal Med*, 42(18), 1819-1826. <https://doi.org/10.1007/s00414-015-0322-2>
20. Simpson C, Williams B, Kellum J. (2015) Guidelines for autopsy investigations of sudden cardiac death. 2013 updated from the Association for European Cardiac Pathology. *Int J Legal Med*, 42(18), 1819-1826. <https://doi.org/10.1007/s00414-015-0322-2>
21. Simpson C, Williams B, Kellum J. (2015) Guidelines for autopsy investigations of sudden cardiac death. 2013 updated from the Association for European Cardiac Pathology. *Int J Legal Med*, 42(18), 1819-1826. <https://doi.org/10.1007/s00414-015-0322-2>
22. Simpson C, Williams B, Kellum J. (2015) Guidelines for autopsy investigations of sudden cardiac death. 2013 updated from the Association for European Cardiac Pathology. *Int J Legal Med*, 42(18), 1819-1826. <https://doi.org/10.1007/s00414-015-0322-2>
23. Simpson C, Williams B, Kellum J. (2015) Guidelines for autopsy investigations of sudden cardiac death. 2013 updated from the Association for European Cardiac Pathology. *Int J Legal Med*, 42(18), 1819-1826. <https://doi.org/10.1007/s00414-015-0322-2>
24. Simpson C, Williams B, Kellum J. (2015) Guidelines for autopsy investigations of sudden cardiac death. 2013 updated from the Association for European Cardiac Pathology. *Int J Legal Med*, 42(18), 1819-1826. <https://doi.org/10.1007/s00414-015-0322-2>

REALIZADO POR:

Susana Galeano Rodríguez

2021-2

